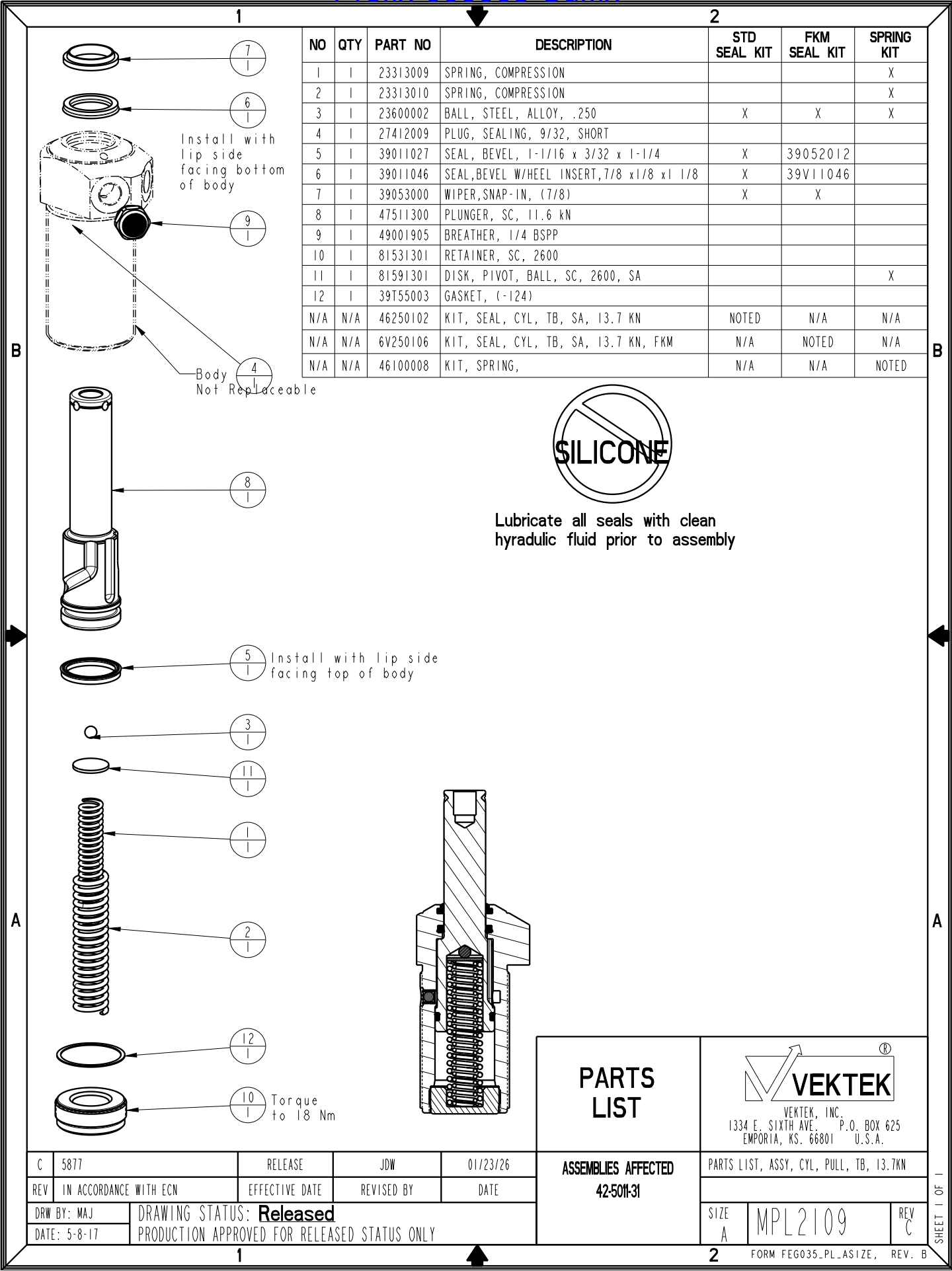



Prefix-000005-Suffix



NO	QTY	PART NO	DESCRIPTION	STD SEAL KIT	FKM SEAL KIT	SPRING KIT
1	1	23313009	SPRING, COMPRESSION			X
2	1	23313010	SPRING, COMPRESSION			X
3	1	23600002	BALL, STEEL, ALLOY, .250	X	X	X
4	1	27412009	PLUG, SEALING, 9/32, SHORT			
5	1	39011027	SEAL, BEVEL, 1-1/16 x 3/32 x 1-1/4	X	39052012	
6	1	39011046	SEAL, BEVEL W/HEEL INSERT, 7/8 x 1/8 x 1 1/8	X	39V11046	
7	1	39053000	WIPER, SNAP-IN, (7/8)	X	X	
8	1	47511300	PLUNGER, SC, 11.6 kN			
9	1	49001905	BREATHER, 1/4 BSPP			
10	1	81531301	RETAINER, SC, 2600			
11	1	81591301	DISK, PIVOT, BALL, SC, 2600, SA			X
12	1	39T55003	GASKET, (-124)			
N/A	N/A	46250102	KIT, SEAL, CYL, TB, SA, 13.7 kN	NOTED	N/A	N/A
N/A	N/A	6V250106	KIT, SEAL, CYL, TB, SA, 13.7 kN, FKM	N/A	NOTED	N/A
N/A	N/A	46100008	KIT, SPRING,	N/A	N/A	NOTED



Lubricate all seals with clean hydraulic fluid prior to assembly

PARTS LIST	 VEKTEK, INC. 1334 E. SIXTH AVE. P.O. BOX 625 EMPORIA, KS. 66801 U.S.A.	
	ASSEMBLIES AFFECTED 42-501-31	PARTS LIST, ASSY, CYL, PULL, TB, 13.7KN
SIZE A	MPL2109	REV C

C	5877	RELEASE	JDW	01/23/26
REV	IN ACCORDANCE WITH ECN	EFFECTIVE DATE	REVISED BY	DATE
DRW BY:	MAJ	DRAWING STATUS: Released		
DATE:	5-8-17	PRODUCTION APPROVED FOR RELEASED STATUS ONLY		